

STANDARD FEATURES:

- 3-piece structural steel guides, minimum 3/16" steel with factory applied UHMW anti-wear strip
- Guides, bottom bars, and headplates are powder coated black at the factory
- UL325 compliant, NEMA rated photo eye sensors
- UL325 compliant, 3ft. or 6ft. NEMA rated light curtain
- Springless Barrel – For high cycle usage with Universal Left/Right Handing
- Soft-Start / Soft-Stop DC Motor - reduces wear and tear, extending operational life

OPTIONS:

- **Vision Panels:** 5" x 3/4" cut out spaced approximately 3" apart and covered with clear Lexan (Flat Slat only)
- **High Cycle:** Cycle life upgradeable to **600,000 cycles** or three years
- **Traffic Light Kit:** 3ft. IP68 LED
- **ASTA QuickPak crating:** significantly reduces install time, costs, and damage
- **Brush Seal:** Header and jamb brush seal with aluminum retainer

For full list of accessories, please contact your local Asta America sales representative.

QUALITY, DURABILITY, AND HIGH PERFORMANCE.

ASTA AMERICA 400HP Series High Performance Door Series is the pinnacle of performance in Rolling Steel door systems. Engineered for durability, security, and seamless fast-moving operation up to 24" per second in the open direction. With unmatched strength, reliability, and performance the **400HP Door Series** ensures maximum protection and operational efficiency for any industrial, commercial, or high cycle application requiring higher performance.



UNIQUE STANDARD FEATURES:

VALUE – The 400HP Series is a fraction of the cost of High Speed products with the added benefits of greater security and durability.

SPEED – Operation up to **3x faster** than a standard service door, with speeds up to 24"/sec opening and 12"/sec closing.

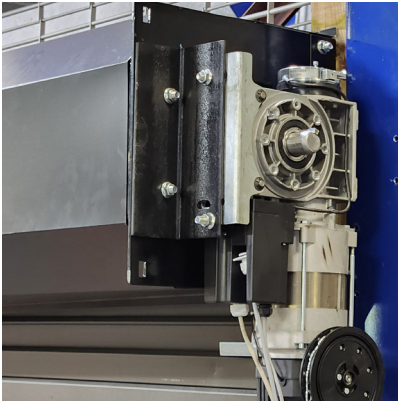
CYCLE LIFE – With **400k cycles** standard and 2 year warranty, the 400HP series springless barrel system provides **16x** the standard service door cycle life.

ENVIRONMENTAL – With a fast-operating VFD (variable frequency drive) motor, the 400HP can help control heating and cooling costs, while reducing operating energy consumption.

DC MOTOR – The soft-start/soft-stop SecureDrive motor has higher starting torque, speed control, and requires minimal maintenance.

SAFETY – Photo eyes and light curtain provide two points of entrapment protection, plus built in SecureGUARD safety through integrated inertia brake and anti-drop safety mechanism.

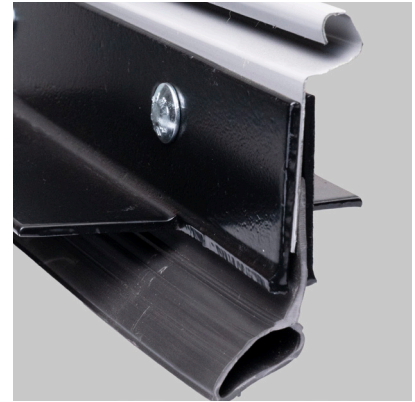
400HP HIGH PERFORMANCE DOOR SYSTEM



OPERATOR: ASTA 400HP Series Doors feature the SecureDrive+ direct drive operator designed specifically for applications requiring high performance. Less wear and tear on the door and operator results in increased operational life.



CONTROL BOX: Plug and Play NEMA 4X wall mounted control panel with variable frequency drive.



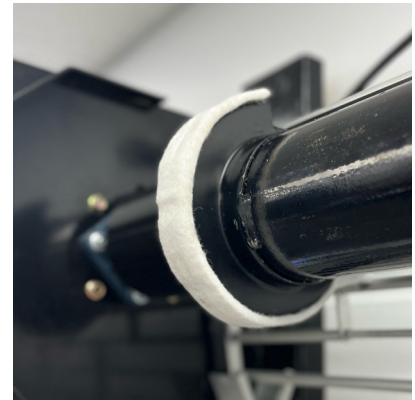
BOTTOM BAR: Curtain bottoms are reinforced with a bottom bar consisting of 2 structural steel angles with PVC bulb astragal for maximum durability.



CURTAIN: The 400HP Series curtains are assembled with durable slats from galvanized grade 50 steel with nylon endlocks.



UHMW STRIP: High Cycle and self-lubricating UHMW applied to interior of guides reduces friction and wear for high cycle applications.



BARREL WITH RINGS: Springless Barrel with rings increase the curtain wrap diameter, allowing for smooth coiling and uncoiling of the door, while reducing maintenance costs.

MODEL	SLAT PROFILE	SLAT MATERIAL	SLAT SIZES	MAX SIZE	COLORS/FINISHES	GUIDE	SPEEDS
422HP	Flat	22 ga Cold Roll Galvanized Steel	2 5/8" x 5/8"	14' x 20'	White, Gray, Tan, Galvanized, PowderCoat	Min. 3/16" Structural Steel	24"/Sec Open 12"/Sec Close
422SHP	Flat	22 ga Stainless Steel #4 Finish	2 5/8" x 5/8"	14' x 20'	Stainless Steel #4 Finish	Min. 3/16" Structural Steel	24"/Sec Open 12"/Sec Close

Exclusively Distributed by: