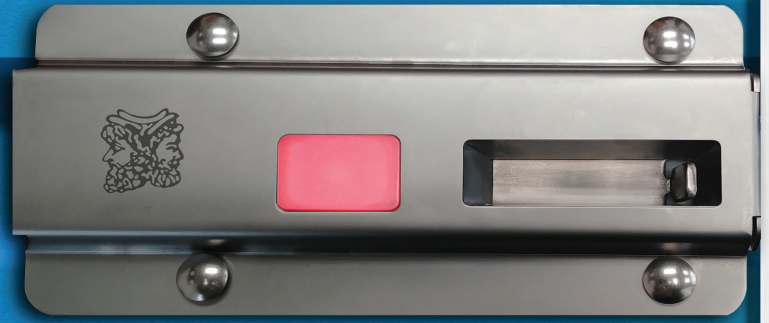




nokē ONE

no key. no problem.

BY JANUS INTERNATIONAL



THE INDUSTRY'S FIRST **ALL-IN-ONE**, ON-DOOR, BLUETOOTH **SMART** LOCK IS HERE



OPERATIONAL BENEFITS AT A GLANCE

- » Easily retrofittable
- » Secures all units, including vacant units
- » No need for doorlocks or door hasps
- » 24/7, live support
- » Automatic overlocking system
- » Opportunity to upsell as premium units
- » Multi-year battery life



CUSTOMER BENEFITS AT A GLANCE

- » Enter unit and view activity with mobile phone
- » Share a digital key in the app (Can revoke in app at anytime)
- » No keys to forget—No more lock cutting/drilling
- » Fully automates the move-in process for tenants

Introducing, Nokē ONE.

Nokē ONE is an electronic **smart** lock that fits on the outside of the individual self-storage unit door. These **smart** locks fit seamlessly to both roll-up and swing doors and were designed to improve the security of individual self-storage units while also making life easier for site managers by automating the lock check and overlocking processes.

Tenants enjoy a more convenient and worry-free self-storage experience with Nokē ONE **smart** locks because they can now use their mobile phones to access the facility and their individual units without worrying about remembering any codes or keys. Your customers can also view access activity, share a digital key with employees, family members, or movers, and move-in to a unit whenever they'd like. Tenants can rent units online, use the app to access the facility and their units and move-in: all without having to come into the office. Nokē ONE allows self-storage owners to capture more rentals by fully automating the move-in process for tenants.

Plus, operators throughout the world are charging a premium for Nokē **smart** units.



To find out more about Nokē ONE, please visit:
JanusIntl.com/nokēONE or call 949-264-5561.

